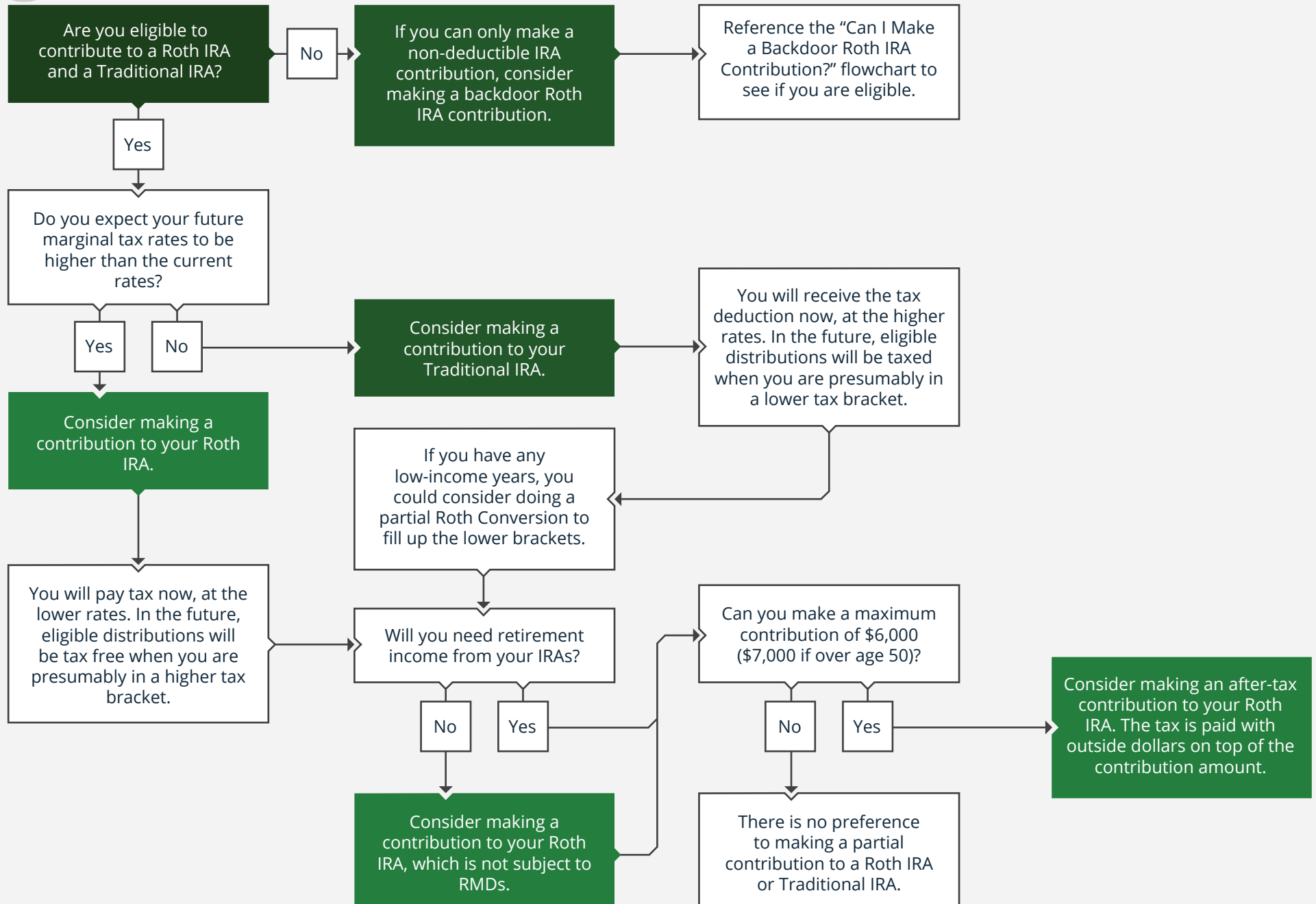


# 2020 · SHOULD I CONTRIBUTE TO MY ROTH IRA VS. MY TRADITIONAL IRA?

 **Start Here**



**LEARN ABOUT HOW WE CAN WORK TOGETHER!**



Visit our website for more educational content about personal finance topics and find out how we can work together. Also, make sure to check out the School of Personal Finance YouTube channel

**Richard McCormack, CFP®**

[rich@schoolofpersonalfinance.com](mailto:rich@schoolofpersonalfinance.com) | 914-299-3843 | [www.schoolofpersonalfinance.com](http://www.schoolofpersonalfinance.com)